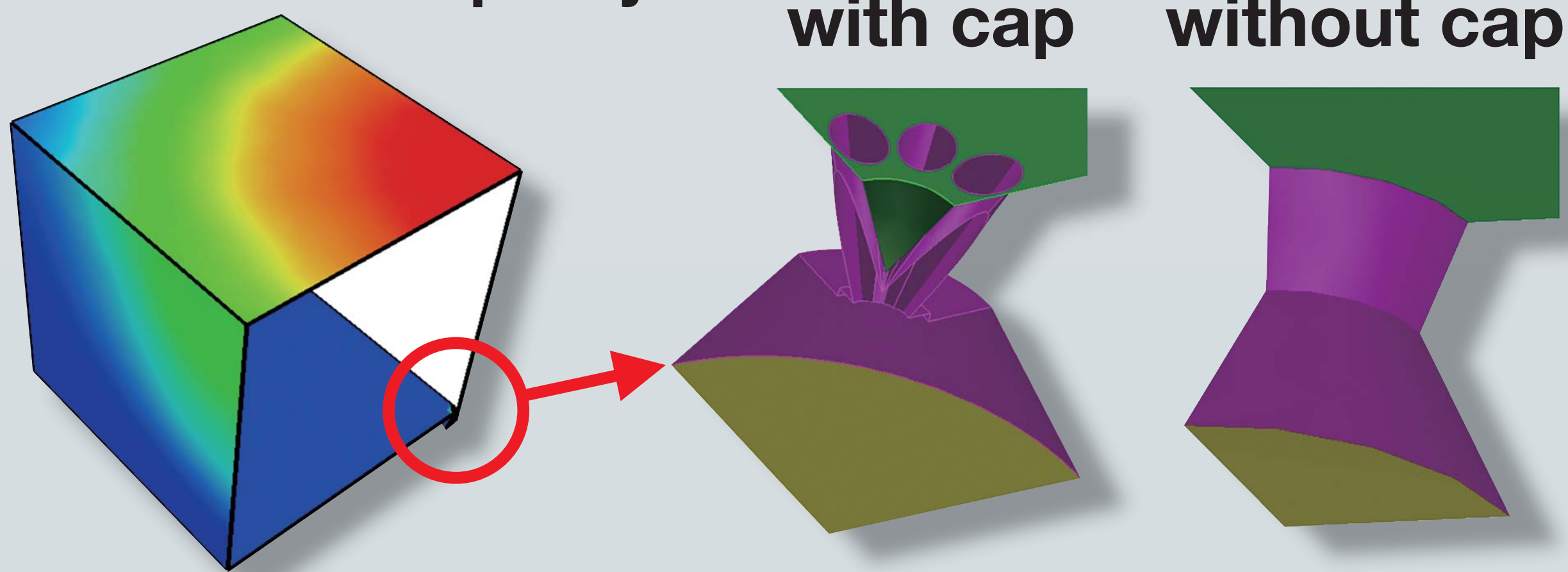


# Rarefied gas flow and plasma simulation

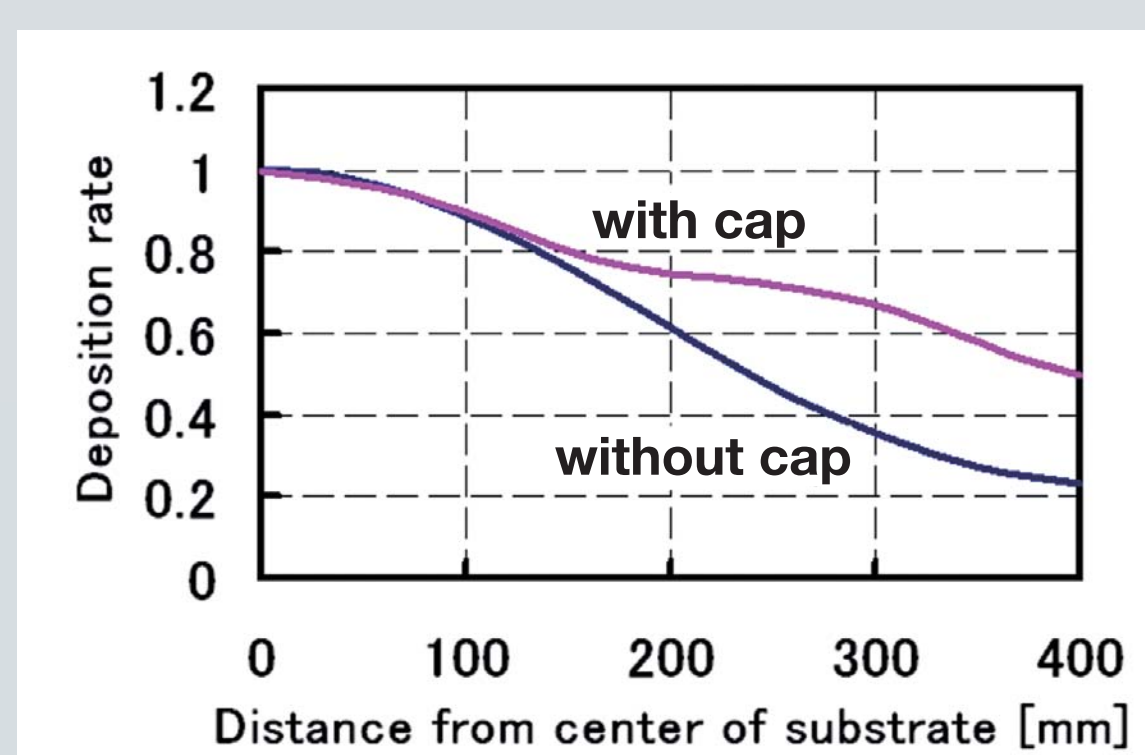
## DSMC-Neutrals

DSMC-Neutrals is the software simulating rarefied gas flow. It has the parallel solver and is available for unstructured mesh (tetrahedron, hexahedron, pyramid, and wedge).

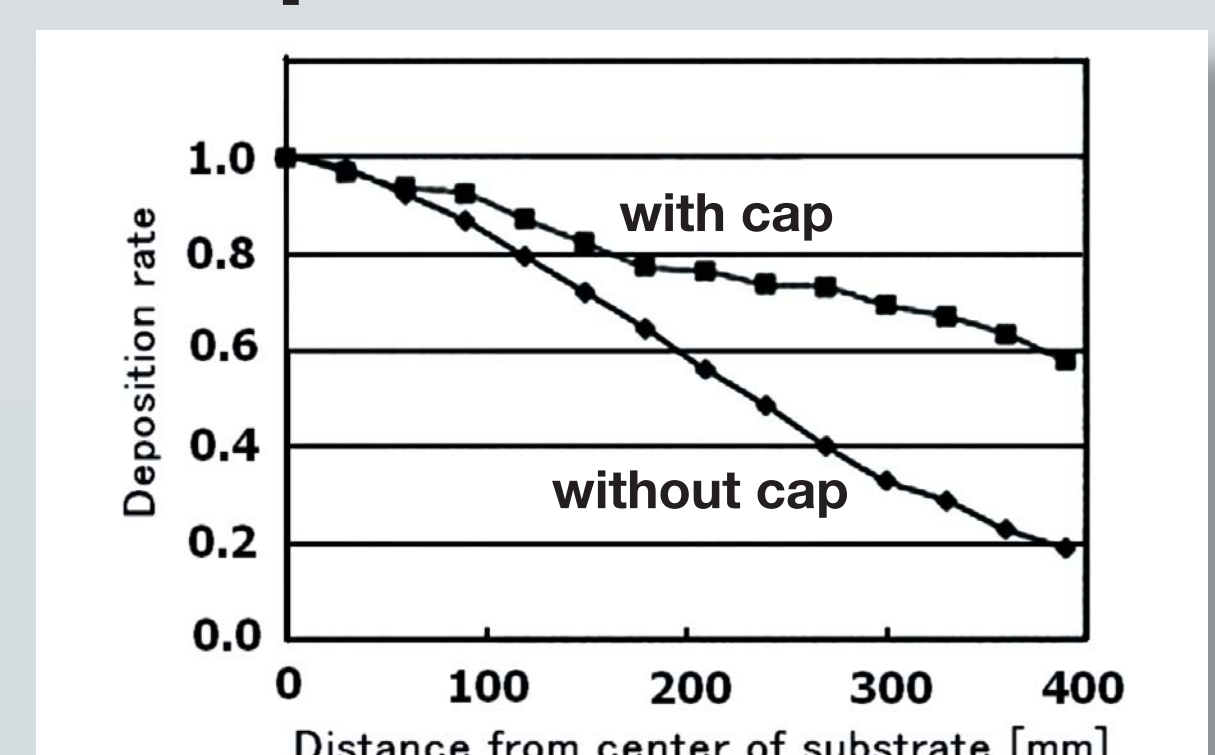
Molecular Beam Epitaxy



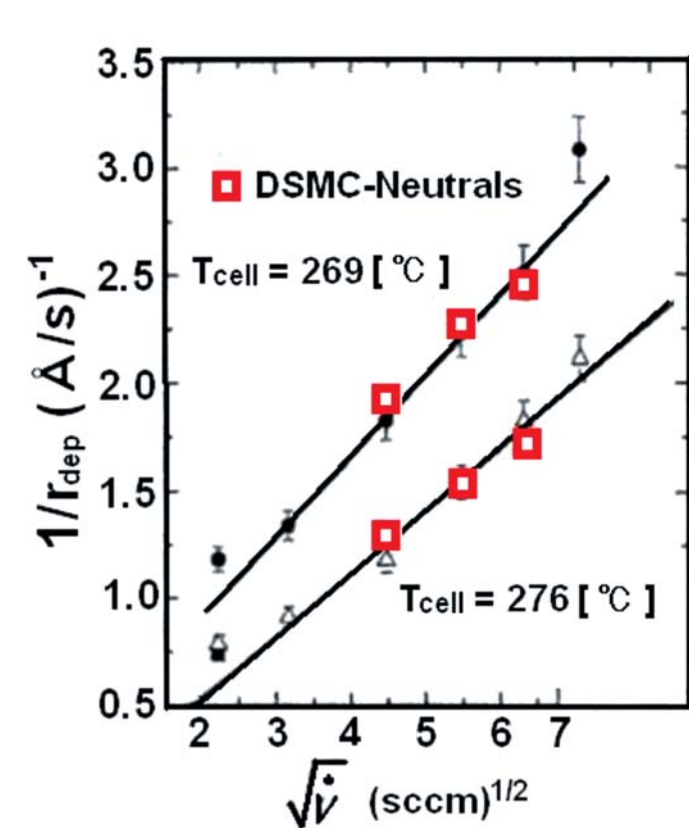
DSMC-Neutrals



Experimental data



LP-OVPD

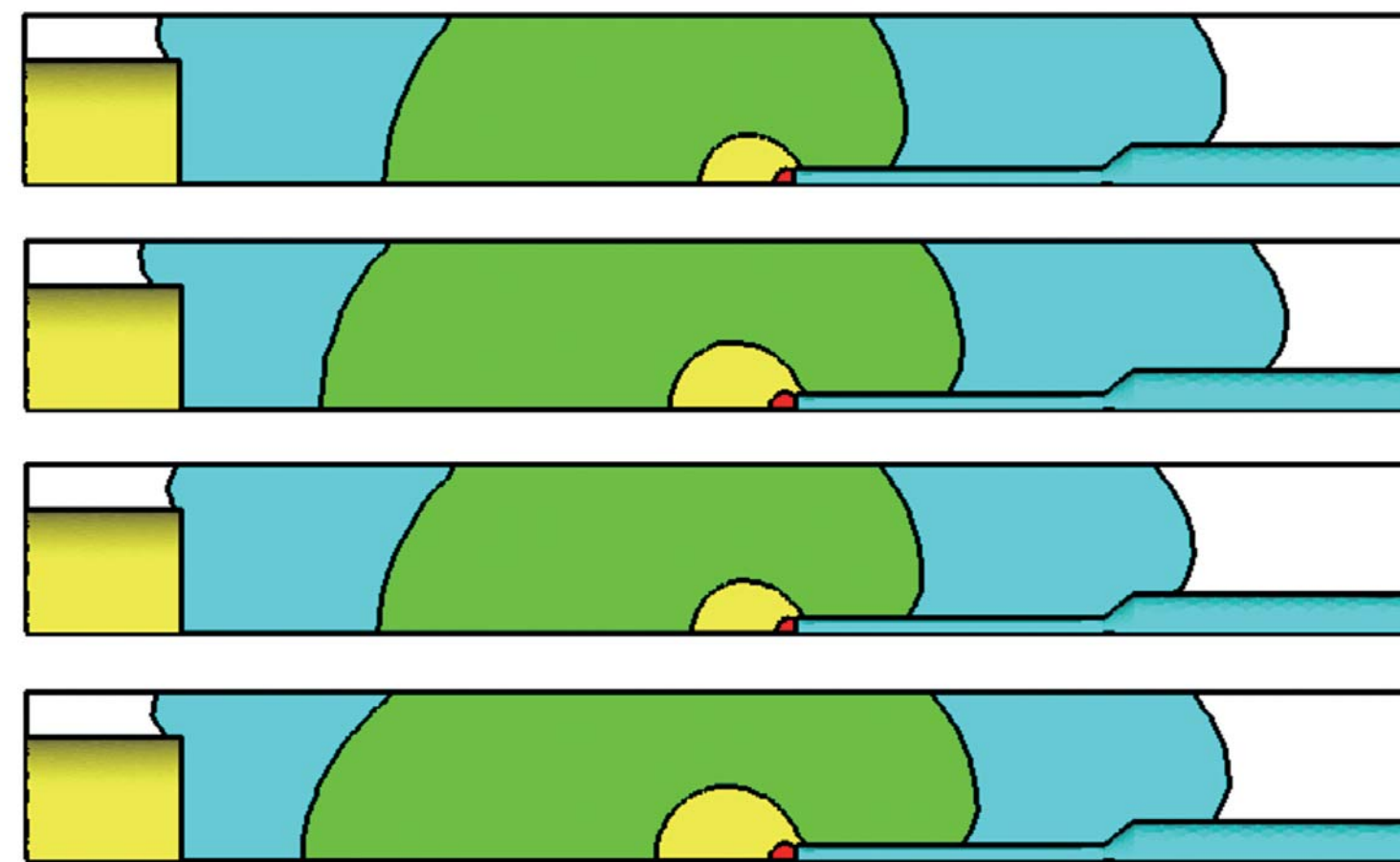


F : 20 [sccm]  
T : 269 [°C]

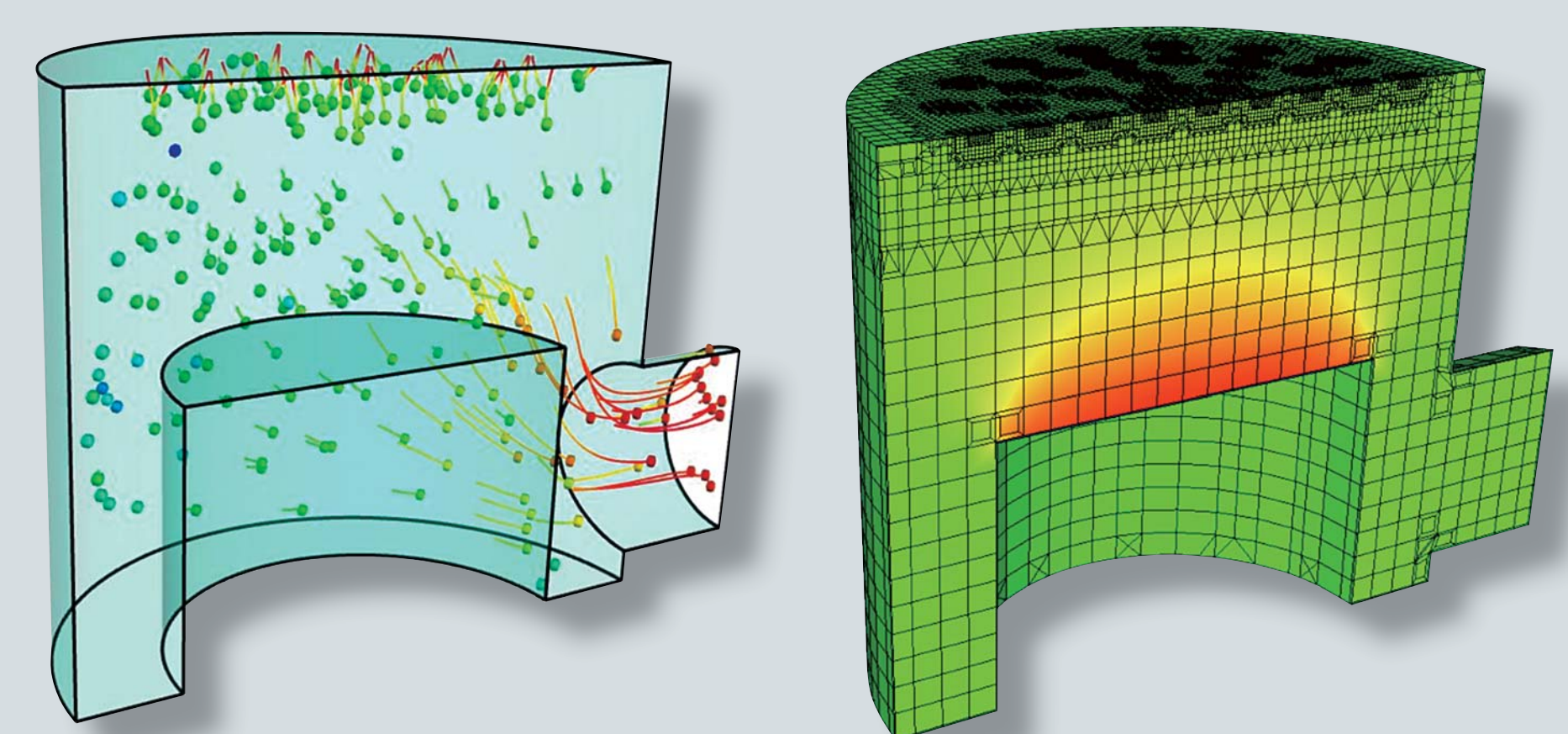
F : 20 [sccm]  
T : 276 [°C]

F : 40 [sccm]  
T : 269 [°C]

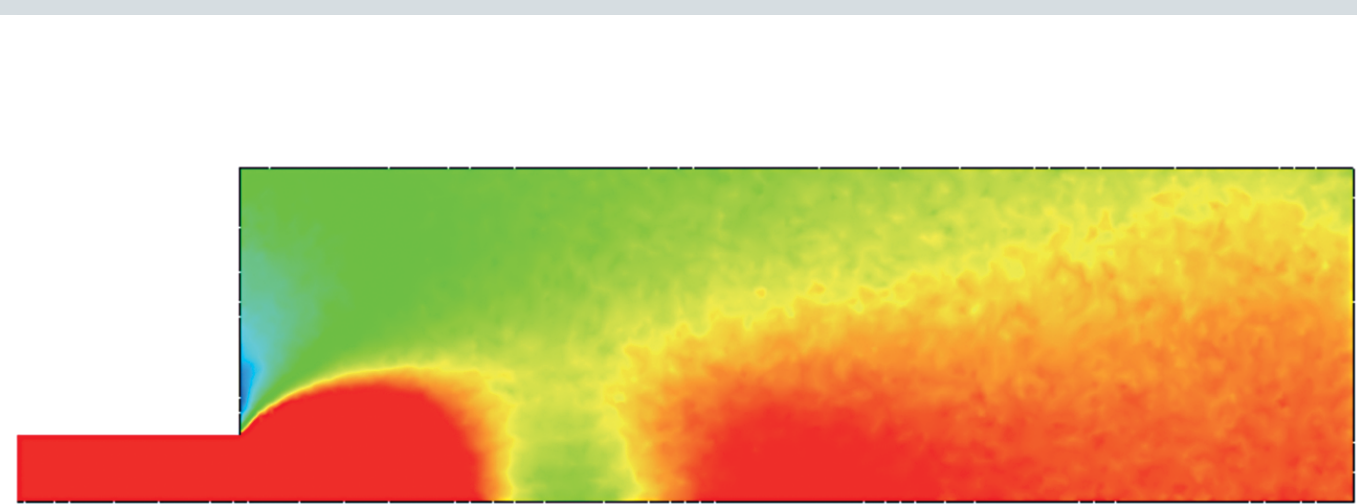
F : 40 [sccm]  
T : 276 [°C]



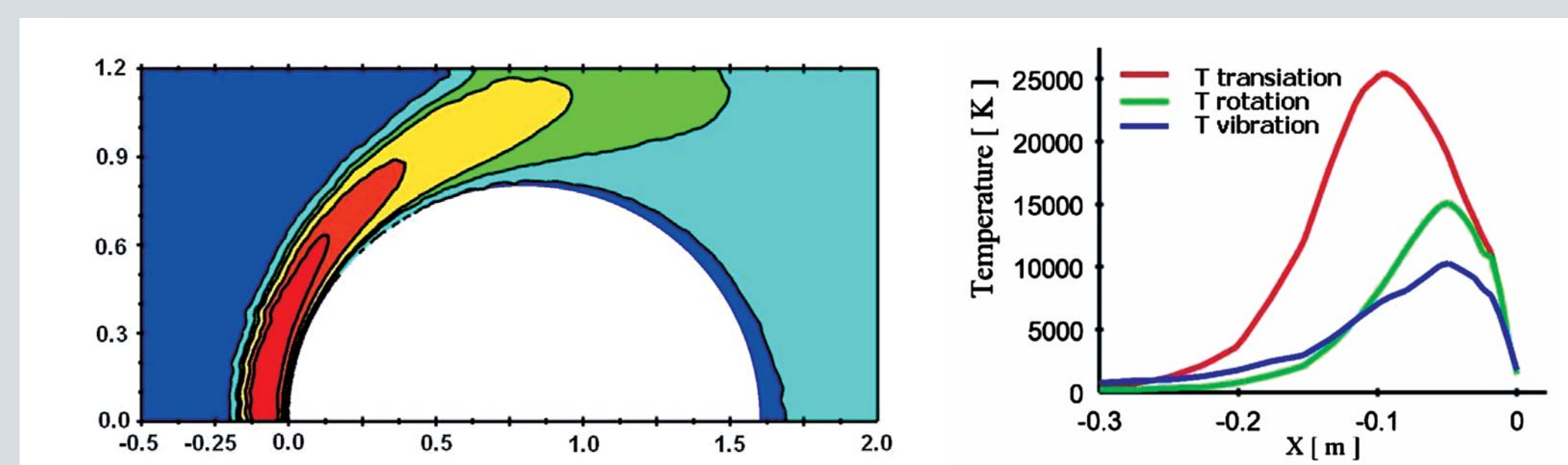
CVD Reactor with Shower Head



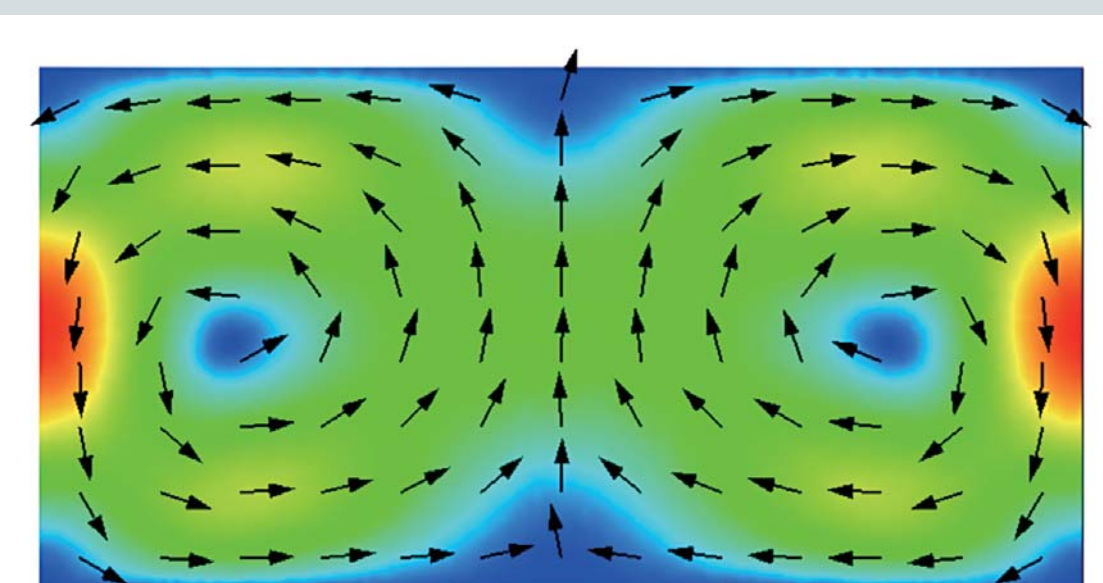
Shock Wave



Hyper Sonic Rarefied Flow



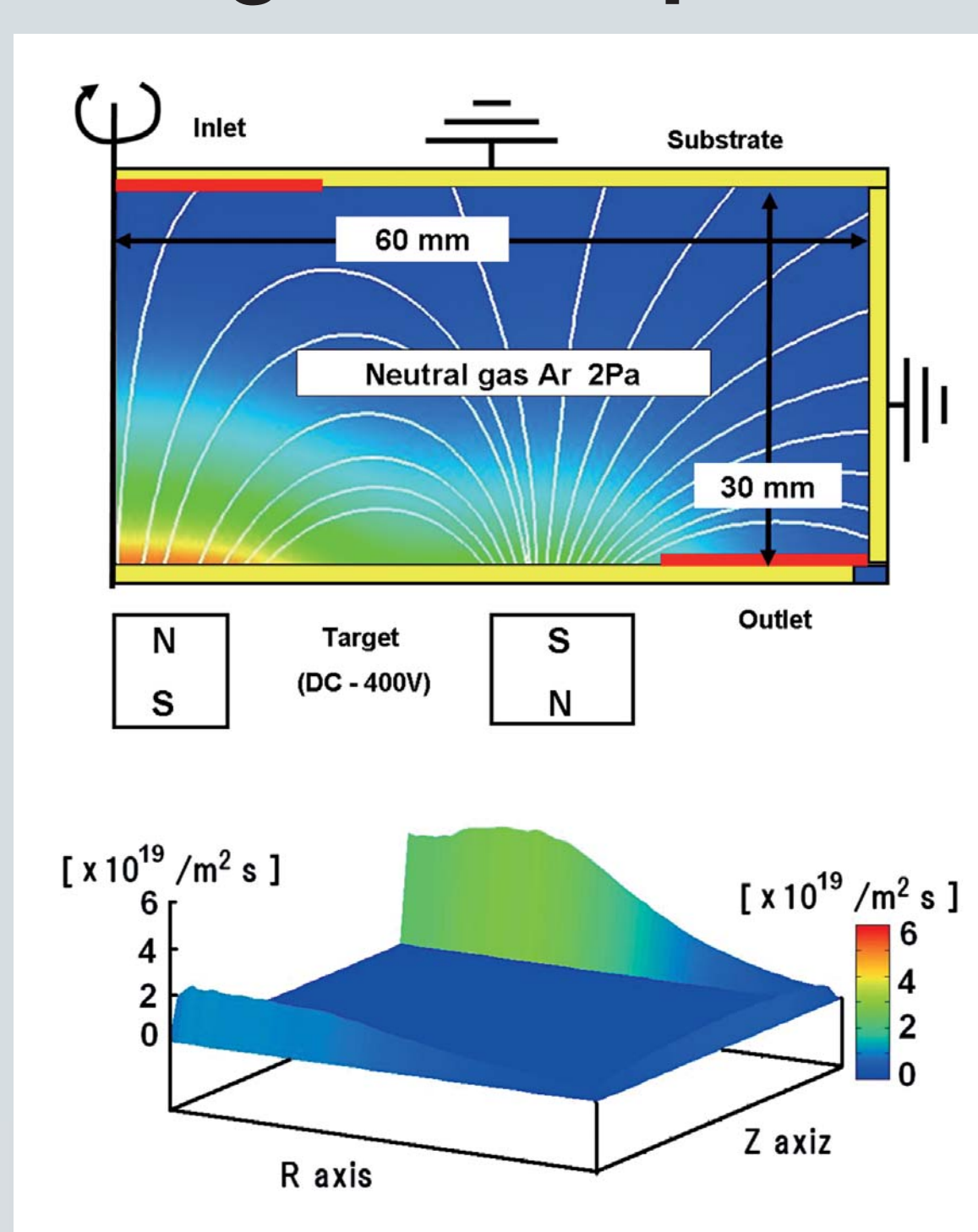
Bénard Convection



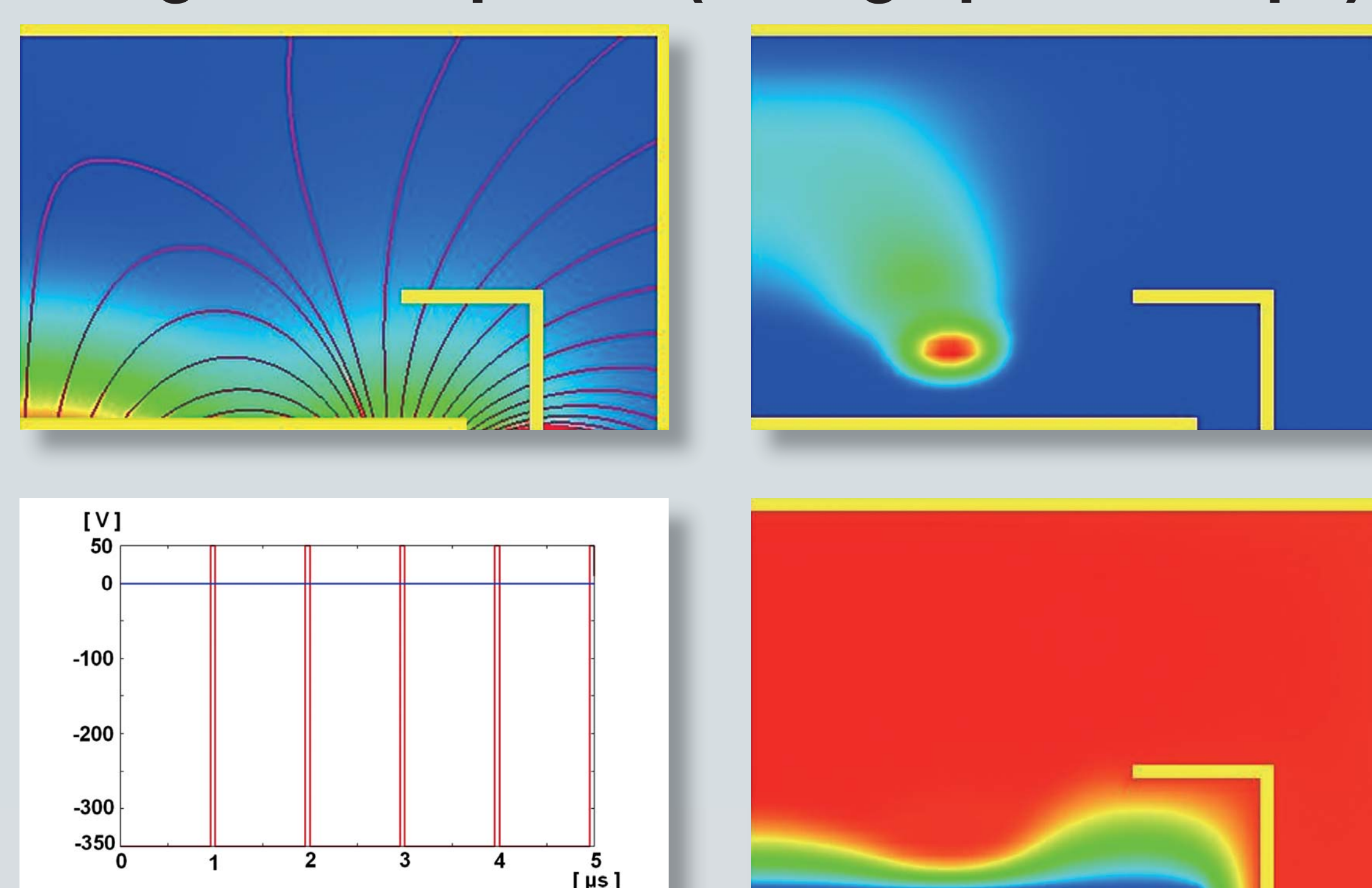
## PARTICLE-PLUS

Particle-PLUS composes of the particle and the continuum models. It is therefore possible to simulate the plasma behavior in any pressure.

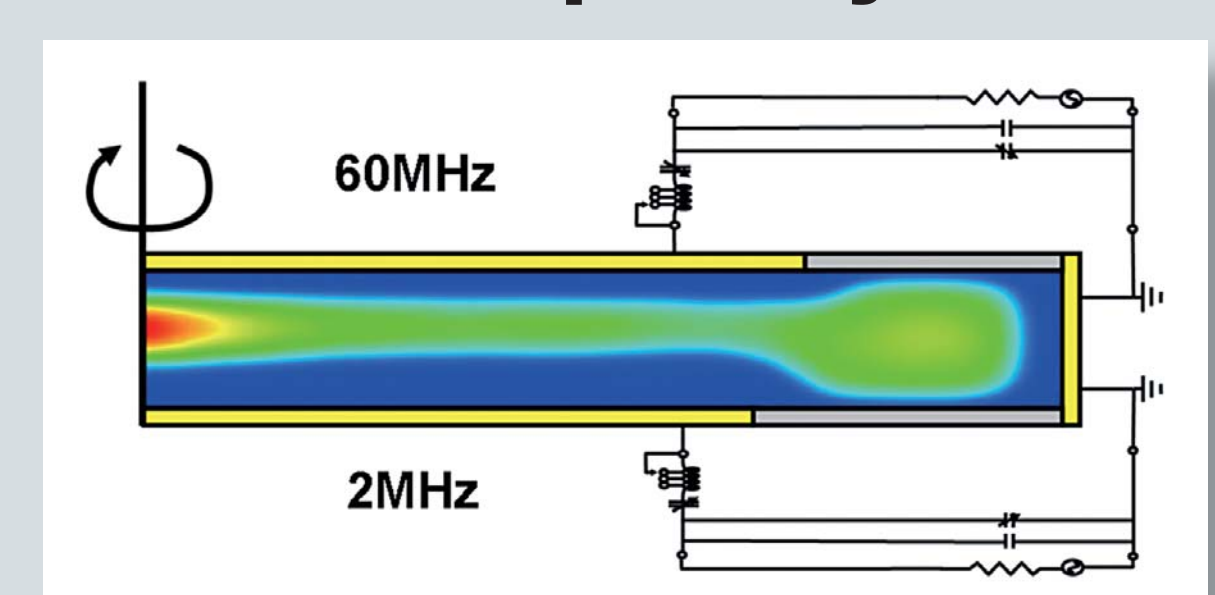
Magnetron Sputter



Magnetron Sputter (voltage pulse shape)



Dual Frequency CCP



Streamer

